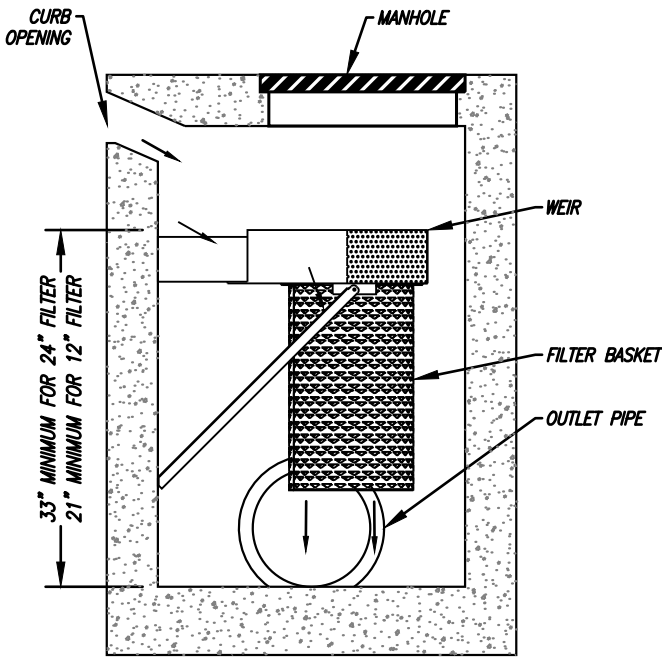
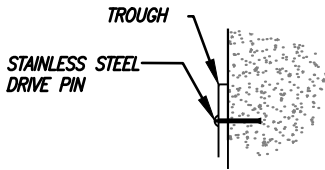


# BIO CLEAN FULL CAPTURE FILTER

## FOR USE IN CURB INLETS



**PROFILE VIEW**

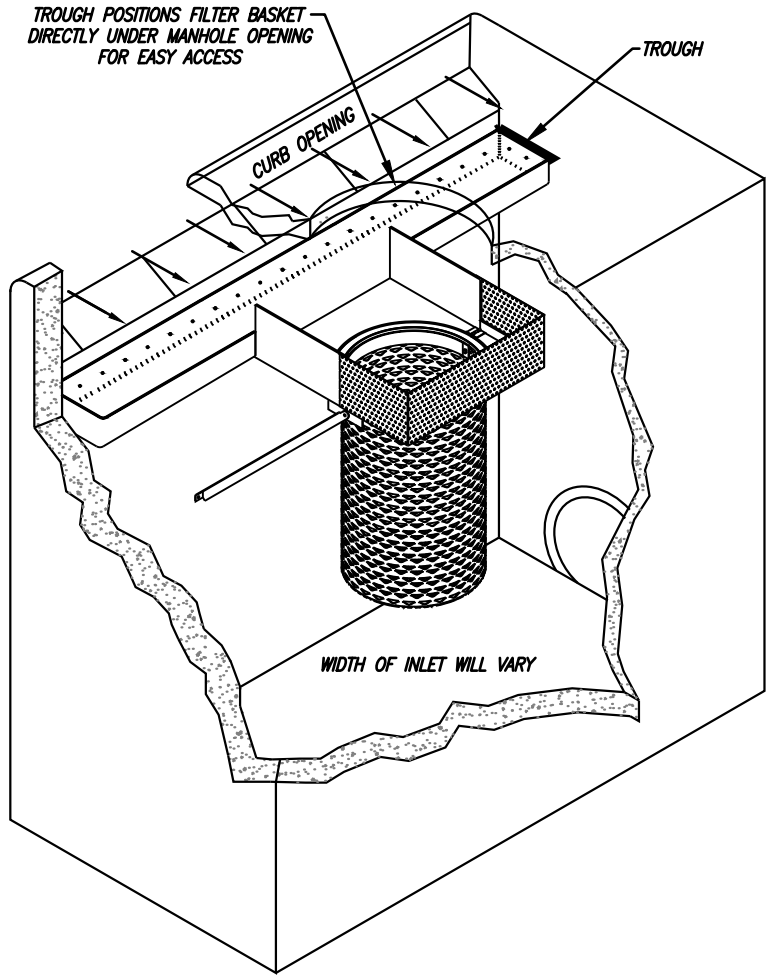


**MOUNTING DETAIL**

### INSTALLATION NOTES

1. TROUGH SYSTEM PROVIDES FOR ENTIRE COVERAGE OF INLET OPENING SO TO DIVERT ALL FLOW TO FILTER.
2. TROUGH SYSTEM TO BE MANUFACTURED FROM MARINE GRADE FIBERGLASS, GEL COATED FOR UV PROTECTION.
3. ALL HARDWARE, FLANGE, FRAME, SHALL BE STAINLESS STEEL.
4. FILTER MANUFACTURED OF 100% STAINLESS STEEL
5. FILTER MADE OF NON-GLOGING SCREEN WITH 4.7 MM OPENINGS AND MEETS FULL CAPTURE REQUIREMENTS
6. FILTER IS LOCATED DIRECTLY UNDER THE MANHOLE FOR EASY REMOVAL AND MAINTENANCE.
7. LENGTH OF TROUGH CAN VARY FROM 2' TO 30'
8. OTHER STANDARD AND CUSTOM MODEL SIZES AVAILABLE - CONTACT CONTECH FOR MORE INFORMATION.
9. BYPASS IS FACILITATED VIA OVERFLOW OF THE TROUGH SYSTEM AND IS EQUAL TO THE CAPACITY OF THE CURB OPENING.
10. ADDITIONAL TREATMENT AND STORAGE CAPACITY CAN BE ACHIEVED BY UTILIZING MULTIPLE FILTER BASKETS.
11. STORAGE CAPACITY BASED ON BASKET HALF FULL.
12. CONCRETE STRUCTURES SOLD SEPARATELY.

NOT TO SCALE



**CONFIGURATION DETAIL**

### PERFORMANCE NOTES

1. MEETS FULL CAPTURE REQUIREMENTS

MODEL #	TREATMENT FLOW RATE (CFS)	SOLIDS STORAGE CAPACITY (CF)
BIO-CURB-FULL-24	2.85	1.4
BIO-CURB-FULL-12	2.85	0.7

PROPRIETARY AND CONFIDENTIAL:

THE INFORMATION CONTAINED IN THIS DOCUMENT IS THE SOLE PROPERTY OF QUIKRETE AND ITS COMPANIES. THIS DOCUMENT, NOR ANY PART THEREOF, MAY BE USED, REPRODUCED OR MODIFIED IN ANY MANNER WITH OUT THE WRITTEN CONSENT OF QUIKRETE.

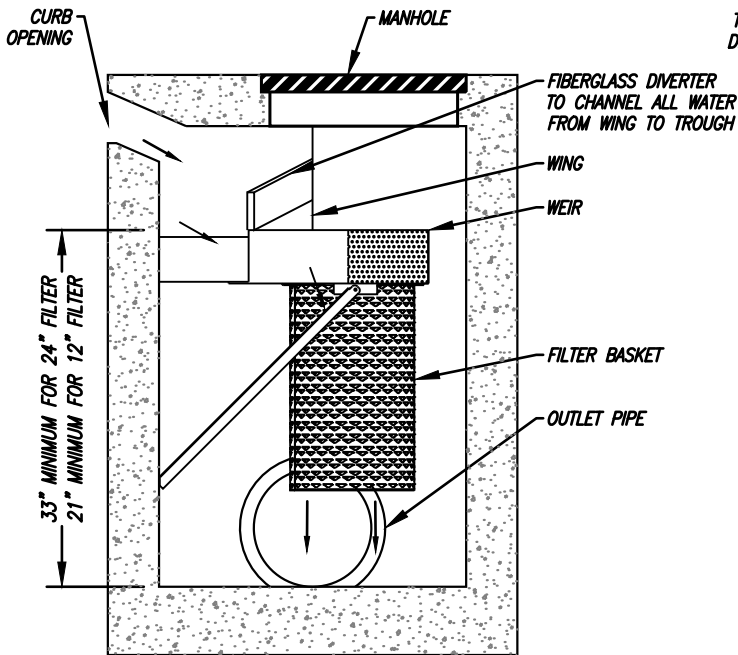


**CURB INLET FILTER  
FULL CAPTURE FILTER  
STANDARD DETAIL**

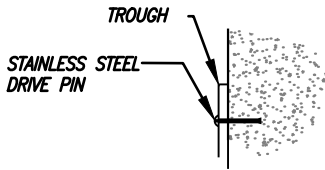
I:\STOR\WATER\COMPOS\59\_FILTER\_INSERT\40\_STANDARD\_DRAWINGS\CIF-FULL\CAPTURE\_CURB\_INLET\_FILTER.DWG 9/19/2025 4:54 PM

# BIO CLEAN FULL CAPTURE FILTER

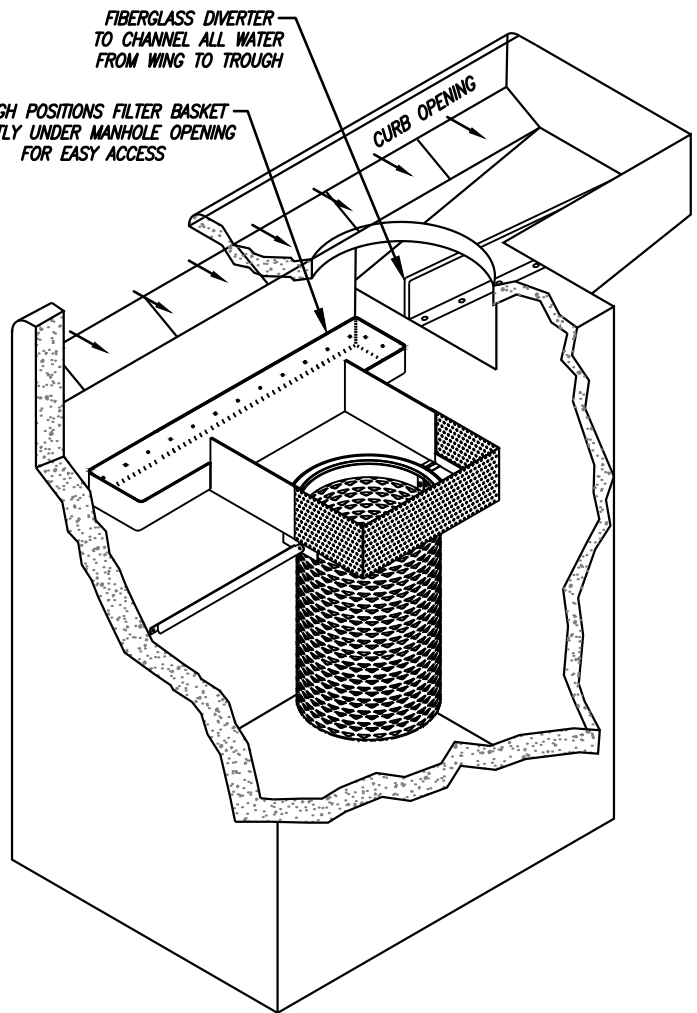
## FOR USE IN CURB INLETS w/WINGS



**PROFILE VIEW**



**MOUNTING DETAIL**



**CONFIGURATION DETAIL**

### INSTALLATION NOTES

1. TROUGH SYSTEM PROVIDES FOR ENTIRE COVERAGE OF INLET OPENING SO TO DIVERT ALL FLOW TO FILTER.
2. TROUGH SYSTEM TO BE MANUFACTURED FROM MARINE GRADE FIBERGLASS, GEL COATED FOR UV PROTECTION.
3. ALL HARDWARE, FLANGE, FRAME, SHALL BE STAINLESS STEEL.
4. FILTER MANUFACTURED OF 100% STAINLESS STEEL
5. FILTER MADE OF NON-GLOGING SCREEN WITH 4.7 MM OPENINGS AND MEETS FULL CAPTURE REQUIREMENTS
6. FILTER IS LOCATED DIRECTLY UNDER THE MANHOLE FOR EASY REMOVAL AND MAINTENANCE.
7. LENGTH OF TROUGH CAN VARY FROM 2' TO 30'
8. OTHER STANDARD AND CUSTOM MODEL SIZES AVAILABLE – CONTACT CONTECH FOR MORE INFORMATION.
9. BYPASS IS FACILITATED VIA OVERFLOW OF THE TROUGH SYSTEM AND IS EQUAL TO THE CAPACITY OF THE CURB OPENING.
10. ADDITIONAL TREATMENT AND STORAGE CAPACITY CAN BE ACHIEVED BY UTILIZING MULTIPLE FILTER BASKETS.
11. STORAGE CAPACITY BASED ON BASKET HALF FULL.
12. CONCRETE STRUCTURES SOLD SEPARATELY.

NOT TO SCALE

### PERFORMANCE NOTES

1. MEETS FULL CAPTURE REQUIREMENTS

MODEL #	TREATMENT FLOW RATE (CFS)	SOLIDS STORAGE CAPACITY (CF)
BIO-CURB-FULL-24	2.85	1.4
BIO-CURB-FULL-12	2.85	0.7

PROPRIETARY AND CONFIDENTIAL:

THE INFORMATION CONTAINED IN THIS DOCUMENT IS THE SOLE PROPERTY OF QUIKRETE AND ITS COMPANIES. THIS DOCUMENT, NOR ANY PART THEREOF, MAY BE USED, REPRODUCED OR MODIFIED IN ANY MANNER WITH OUT THE WRITTEN CONSENT OF QUIKRETE.

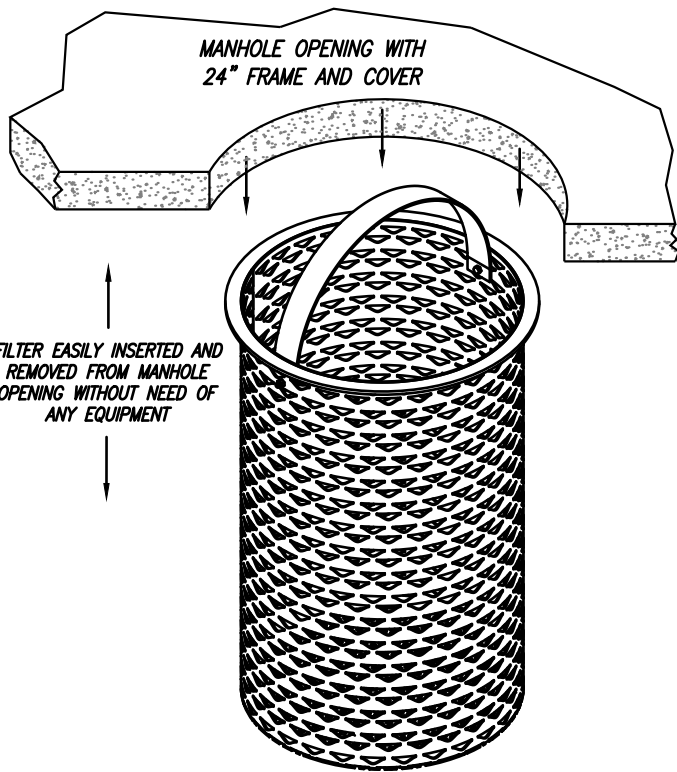


**CURB INLET FILTER  
FULL CAPTURE FILTER  
STANDARD DETAIL**

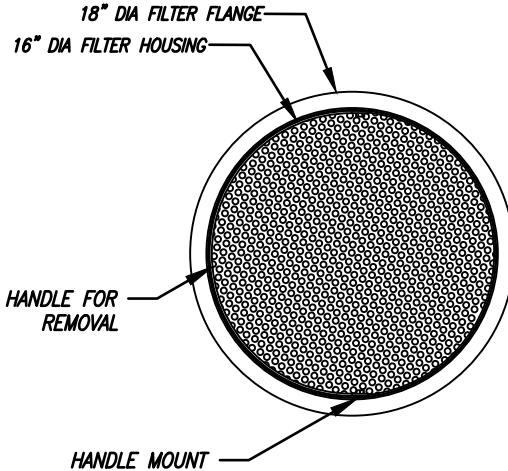
I:\STOR\WATER\COMPOS\59\_FILTER\_INSERT\40\_STANDARD\_DRAWINGS\CIF-FULL\CAPTURE\_CURB\_INLET\_FILTER.DWG 2/24/2026 1:36 PM

# BIO CLEAN FULL CAPTURE FILTER

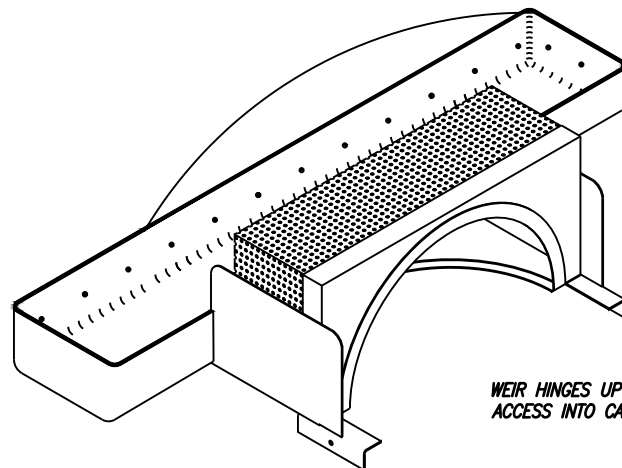
## FOR USE IN CURB INLETS



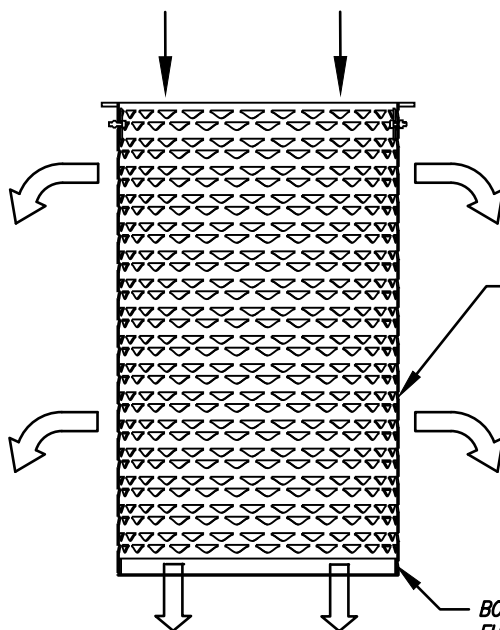
**INSTALLATION DETAIL**



**DETAIL OF DIAMETERS**



**WEIR DETAIL**



**FLOW PATH**

FLOW RATES - FULL CAPTURE FILTER	
FILTER TREATMENT FLOW RATE	2.85 CFS
SAFETY FACTOR = 2	
TREATMENT FLOW RATE IS BASED ON THE CRITICAL POINT OF RESTRICTION, WHICH IS EITHER THE WEIR OR THE SCREEN CAPACITIES	
WEIR CAPACITY = 2.85 CFS	
12" TALL X 16"Ø SCREEN CAPACITY = 4.24 CFS	
FLOW RATES CALCULATED USING THE FOLLOWING EQUATION	
$Q = S0 * c_d * A \sqrt{2 * g * h}$ $c_d = 0.62$	
SEE PAGE 1 FOR NOTES	

NOT TO SCALE

PROPRIETARY AND CONFIDENTIAL:

THE INFORMATION CONTAINED IN THIS DOCUMENT IS THE SOLE PROPERTY OF QUIKRETE AND ITS COMPANIES. THIS DOCUMENT, NOR ANY PART THEREOF, MAY BE USED, REPRODUCED OR MODIFIED IN ANY MANNER WITHOUT THE WRITTEN CONSENT OF QUIKRETE.



**CURB INLET FILTER  
FULL CAPTURE FILTER  
STANDARD DETAIL**